

(612) 355-8121

WWW.ROOFPANELSPUS.COM



STANDARD COLOR CHART

Cool coatings with premium heat-reflective technology from Coated Metals Group.
 Durapon 70™ Full Strength 70% PVDF and Dura Coat XT40S™ Siliconized Polyester (SMP) Pre-Finished Steel Flat Sheets & Coil.

* Metallic Color
 ** Premium Finish

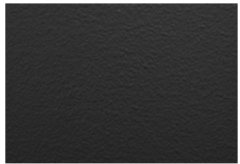
Deep Black	Matte Black	Charcoal Gray	Musket Gray	Slate Gray	Ash Gray
Almond	Bright White	Bone White	Stone White	Cityscape	Pebble Clay
Sandstone	Sierra Tan	Antique Ivory	Medium Bronze	Dark Bronze	Extra Dark Bronze
Regal Red	Colonial Red	Burgundy	Terra Cotta	Mansard Brown	Burnished Slate
Hartford Green	Classic Green	Hemlock Green	Teal	Slate Blue	Royal Blue
Galvalume Plus	*Copper Penny	*Weathered Zinc	*Silver Metallic	*Champagne	*Aged Copper
** Black Ore	** Vintage	** Western Rust	** Rustic Rawhide	** Custom Color	



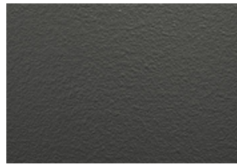
TEX3D SMP Finishes

Cool coatings with premium heat-reflective technology and tactile textured finish from Coated Metals Group
Dura Coat XT40S™ Siliconized Polyester (SMP) Pre-Finished Steel Flat Sheets & Coil.

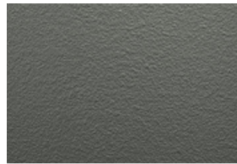
* Metallic Color
** Premium Finish



Matte Black



Charcoal Gray



Musket Gray



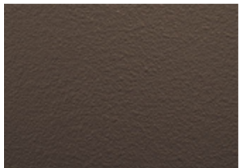
Slate Gray



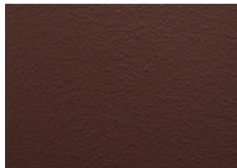
Dark Bronze



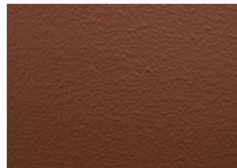
Burnished Slate



Mansard Brown



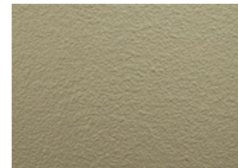
Burgundy



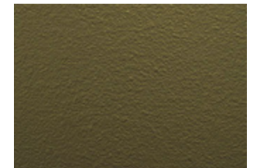
Colonial Red



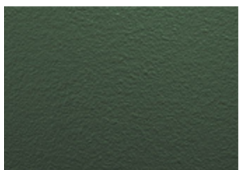
Terra Cotta



Sierra Tan



Medium Bronze



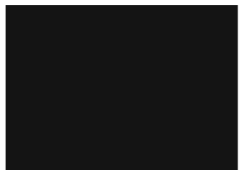
Hartford Green



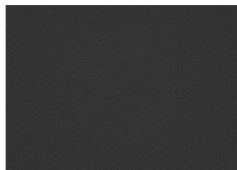
Classic Green

Ultra Low Gloss PVDF Finishes

Cool coatings with premium heat-reflective technology and Ultra-Low Gloss, Low-Sheen technology from Coated Metals Group.
Dura Coat Durapon 70™ Full-Strength 70% PVDF Pre-Finished Steel Flat Sheets & Coil



Deep Black



Carbon



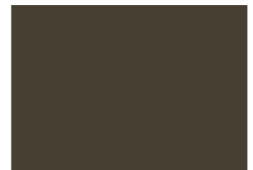
Charcoal Gray



Slate Gray



Dark Bronze



Burnished Slate



Iron Ore

Metal samples and additional custom colors are available upon request. Please refer to the Stock Availability matrix for gauge, width, and paint finish availability.

Oil canning is an inherent part of light gauge cold-formed metal products and is not cause for coil, sheet, or panel rejection. Protective film must be removed immediately after installation. Color and sizes can change without notice. Additional sizes, gauges, and colors may be available, please contact your local sales representative

Colors represented on this electronic chart may not exactly match actual material. All colors should be verified using actual metal samples. Mismatch of electronic representations and actual material shall not be accepted as cause for rejection. Many finishes are production batch-specific and may result in slight variations in visual match. Do not mix or use materials purchased from separate sales orders on individual projects. Visual variation between separate order batches used on individual projects shall not constitute cause for rejection or claim.



Dura Coat
PRODUCTS
An Axalite Coating Systems Company

MADE IN AMERICA



Durapon70
Ceranamel XT-40S

Color Name	ULTRA-COOL RATINGS			22 ga.	24 ga.		24 ga. ULG		26 ga.		26 ga. TEX3D		28 ga.
	Reflect	Emiss	SRI	48"	40"	48"	40"	48"	40"	48"	40"	48"	42"
Acrylic Coated Galvalume	N/A	N/A	N/A	•	•	•			•	•			•
Aged Copper	26.80%	0.85	26		•	•							
Almond	61.40%	0.83	72	•	•	•			•				•
Antique Ivory	N/A	N/A	N/A						•				•
Ash Gray	49.80%	0.85	56			•			•				
Black Ore	8.00%	0.9	4		•	•							
Bone White	67.60%	0.84	81	•	•	•			•				•
Bright White	67.80%	0.84	81			•			•				
Burgundy	27.10%	0.85	26		•	•			•	•	•	•	
Burnished Slate	25.10%	0.83	33		•	•	•	•	•	•	•	•	
Carbon	5.80%	0.85	0				•	•					
Champagne	47.20%	0.8	51			•							
Charcoal Gray	25.30%	0.84	23	•	•	•	•	•	•	•	•	•	•
Cityscape	45.20%	0.87	51		•	•							
Classic Green	30.50%	0.85	30		•	•			•	•	•	•	•
Colonial Red	33.20%	0.86	35		•	•			•	•	•	•	•
Copper Penny	43.90%	0.84	48		•	•			•				
Dark Bronze	27.70%	0.85	27	•	•	•	•	•	•	•	•	•	•
Deep Black	26.70%	0.84	25	•	•	•	•	•	•	•			•
Extra Dark Bronze	N/A	0.88	-2		•	•							
Hartford Green	27.10%	0.83	25	•	•	•			•	•	•	•	•
Hemlock Green	31.10%	0.85	31		•	•							
Iron Ore	26.90%	0.85	26				•	•					
Mansard Brown	26.00%	0.85	25	•	•	•			•	•	•	•	•
Matte Black	26.80%	0.84	25	•	•	•			•	•	•	•	•
Medium Bronze	30.90%	0.86	31	•	•	•			•	•	•	•	•
Musket Gray	34.80%	0.83	35		•	•			•	•	•	•	
Pebble Clay	43.40%	0.84	47						•				•
Regal Red	38.50%	0.85	41			•			•				
Royal Blue	26.80%	0.85	26		•	•			•				
Rustic Rawhide	31.00%	0.88	32			•							
Sandstone	59.70%	0.82	69	•		•							
Sierra Tan	45.80%	0.83	50	•	•	•			•	•	•	•	•
Silver	55.60%	0.81	63		•	•							
Slate Blue	32.80%	0.84	33		•	•			•				
Slate Gray	37.50%	0.82	38	•	•	•	•	•	•	•	•	•	•
Stone White	65.60%	0.82	77			•							
Teal	27.90%	0.85	27		•	•							
Terra Cotta	41.90%	0.83	45			•			•	•	•		
Vintage	30.00%	0.7	22		•	•							
Weathered Zinc	38.30%	0.85	41		•	•							
Western Rust	24.00%	0.87	23		•	•							

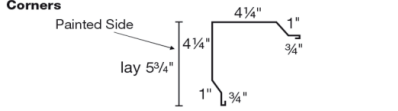

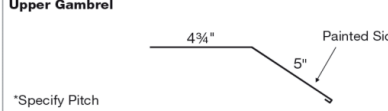
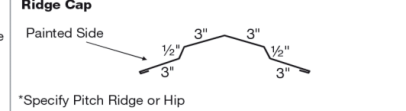
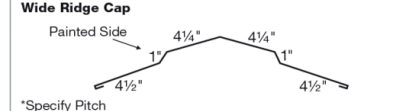
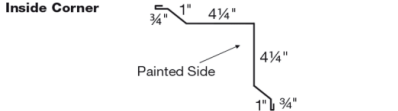
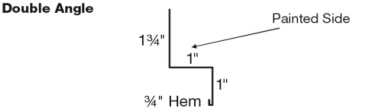

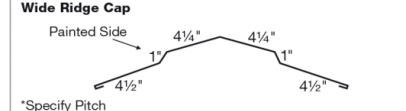
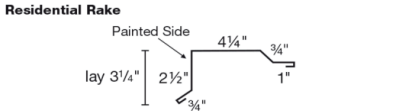
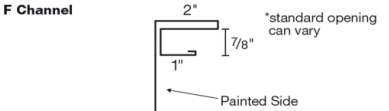
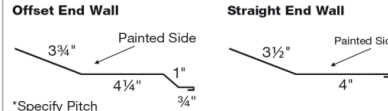
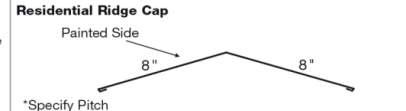
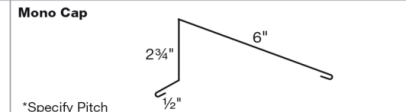
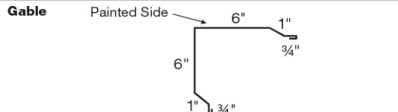
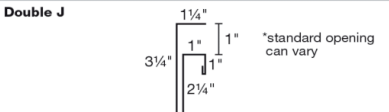
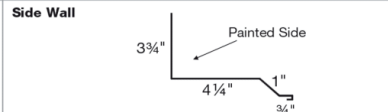
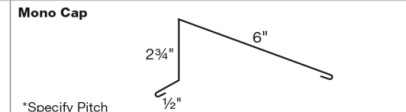
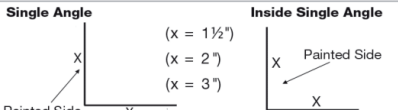
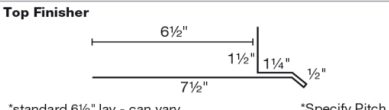
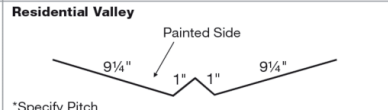
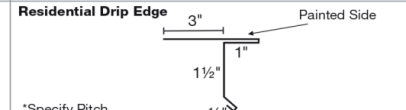
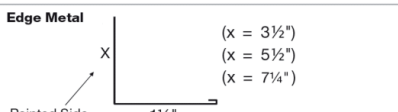
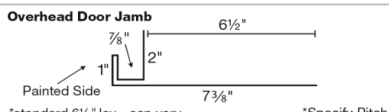
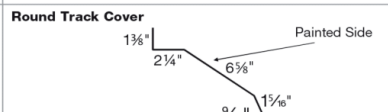
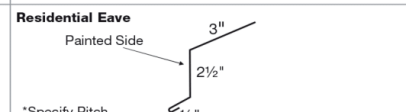
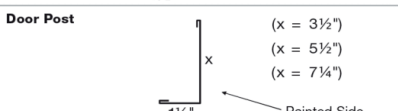
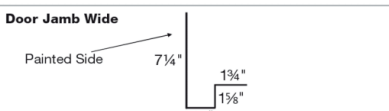
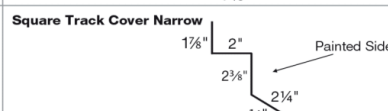
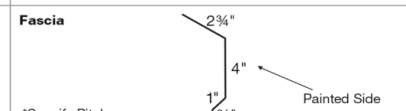
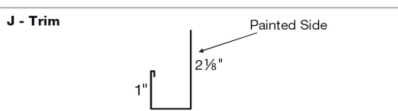

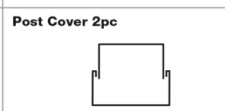

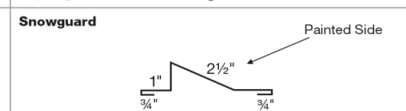


ROOF PANELS PLUS

MINNESOTA - WISCONSIN
IOWA - ND - SD

(612) 355-8121

16525 MN-65, Ham Lake, MN 55304

Corners 	Square Base Rat Guard 	Rat Guard 	Upper Gambrel  <p>*Specify Pitch</p>	Ridge Cap  <p>*Specify Pitch Ridge or Hip</p>
Inside Corner 	Double Angle 	Lower Gambrel  <p>*Specify Pitch</p>	Wide Ridge Cap  <p>*Specify Pitch</p>	
Residential Rake 	F Channel  <p>*standard opening can vary</p>	Offset End Wall  <p>*Specify Pitch</p>	Straight End Wall 	Residential Ridge Cap  <p>*Specify Pitch</p>
Gable 	Double J  <p>*standard opening can vary</p>	Side Wall 	Mono Cap  <p>*Specify Pitch</p>	
Single Angle 	Inside Single Angle 	Top Finisher  <p>*standard 6 1/2" lay - can vary</p> <p>*Specify Pitch</p>	Residential Valley  <p>*Specify Pitch</p>	
Edge Metal 	Overhead Door Jamb  <p>*standard 6 1/2" lay - can vary</p> <p>*Specify Pitch</p>	Round Track Cover 	Residential Eave  <p>*Specify Pitch</p>	
Door Post 	Door Jamb Wide 	Square Track Cover Narrow 	Fascia  <p>*Specify Pitch</p>	
J - Trim 	Window Cap 	Post Cover 2pc 	Post Cover 1pc 	Snowguard 

*Trims come in minimum lengths of 10'6" and increase by 2' increments up to 20'6"

*Custom trims available upon submission and approval

5



LIFETIME METAL ROOFING FABRICATION AND INSTALLATION

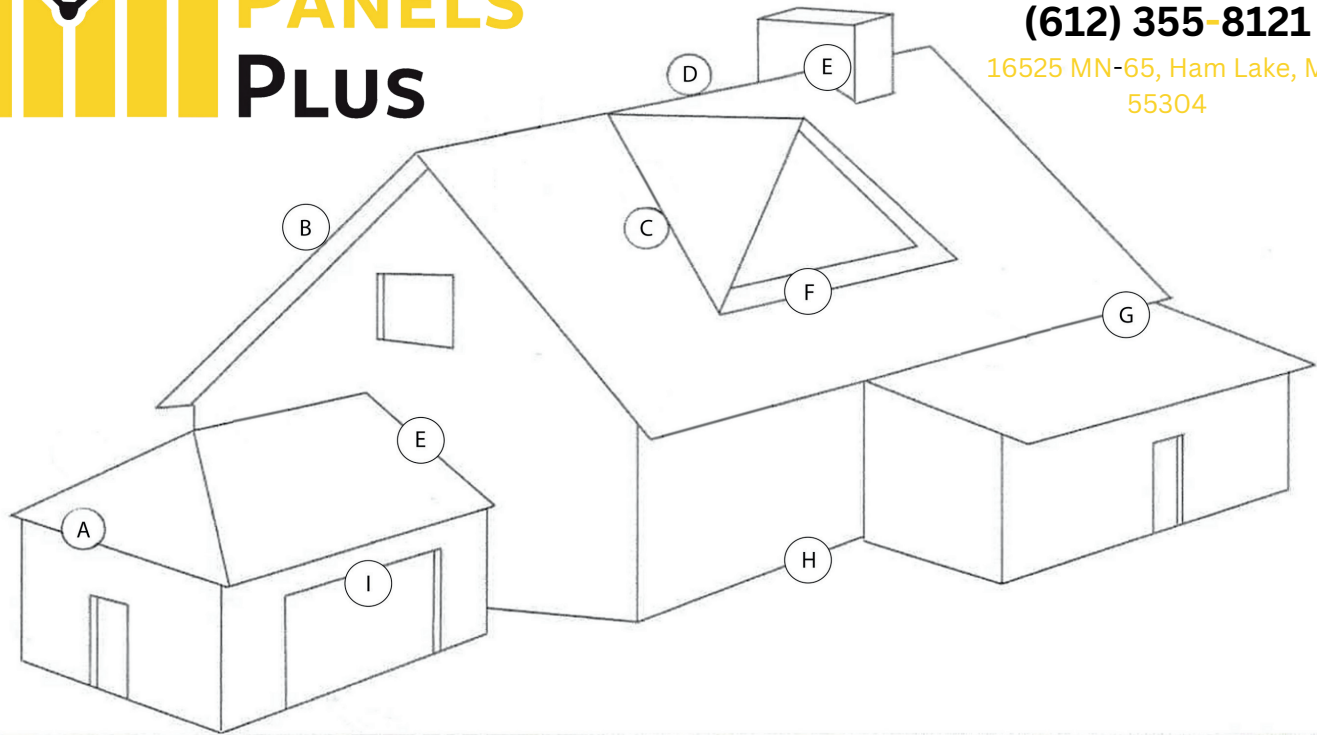


MINNESOTA - WISCONSIN

IOWA - ND - SD

(612) 355-8121

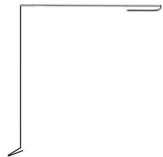
16525 MN-65, Ham Lake, MN
55304



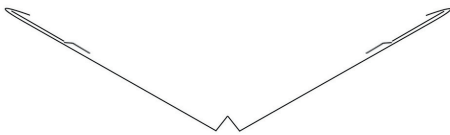
A: Drip Edge



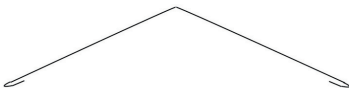
B: Rake Edge



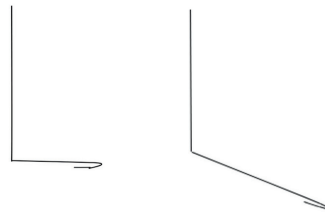
C: Valley



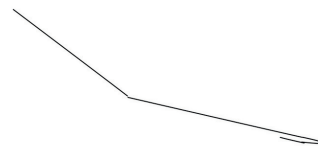
D: Ridge



E-F: Roof To Wall Flashings



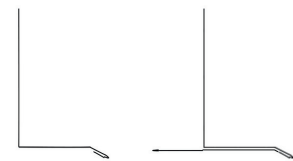
G: Transitions



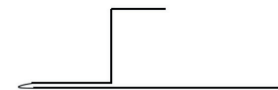
Soffit/Wall Panels (With Fascia)



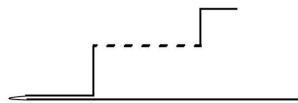
H: Sill/Double Back Sill



Modified J Channel



Vented Modified J Channel



*All shapes, sizes, angles etc. can and will be changed to best suit your project.

5



LIFETIME METAL ROOFING
FABRICATION AND INSTALLATION



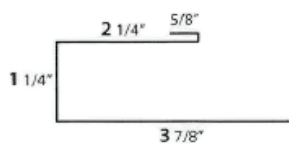
ROOF PANELS PLUS

MINNESOTA - WISCONSIN
IOWA - ND - SD

(612) 355-8121

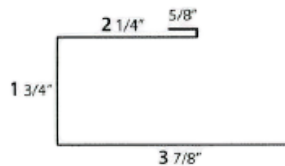
16525 MN-65, Ham Lake, MN 55304

REVERSE J - 1"



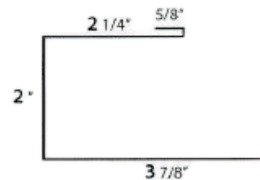
*Specify Perforation

REVERSE J - 1 1/2"



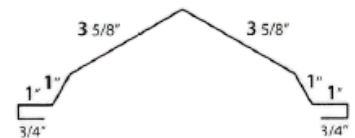
*Specify Perforation

REVERSE J - 1 3/4"



*Specify Perforation

RIDGE CAP



*Specify Pitch

HIP CAP

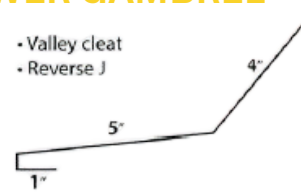


*Specify Pitch

SIDEWALL



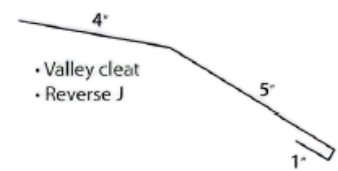
LOWER GAMBREL



- Valley cleat
- Reverse J

*Specify Pitch (from what to what)

UPPER GAMBREL



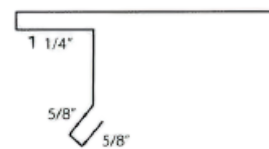
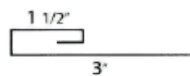
- Valley cleat
- Reverse J

*Specify Pitch (from what to what)

STARTER

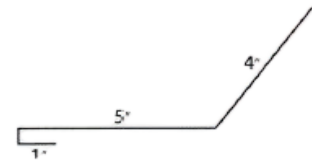


DRIP EDGE



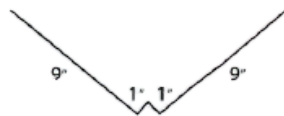
*Specify Pitch

ENDWALL



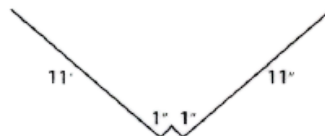
*Specify Pitch

VALLEY



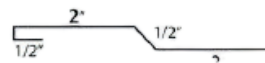
20" Coil
*Specify Pitch

VALLEY



24" Coil
*Specify Pitch

VALLEY CLEAT



REVERSE J TRIMS

- Ridge Cap
- Hip Cap
- Sidewall
- Lower Gambrel
- Upper Gambrel
- Endwall
- Starter for Rake

5



**LIFETIME METAL ROOFING
FABRICATION AND INSTALLATION**



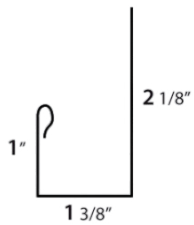
ROOF PANELS PLUS

MINNESOTA - WISCONSIN
IOWA - ND - SD

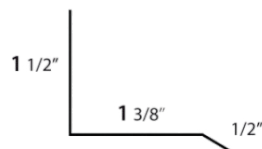
(612) 355-8121

16525 MN-65, Ham Lake, MN 55304

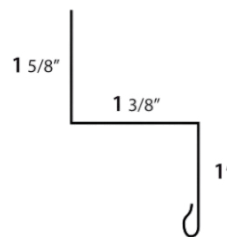
J TRIM



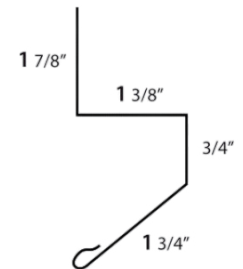
WINDOW CAP



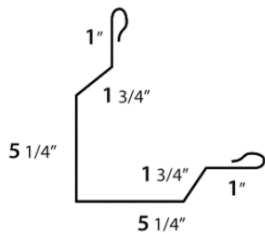
DOUBLE ANGLE



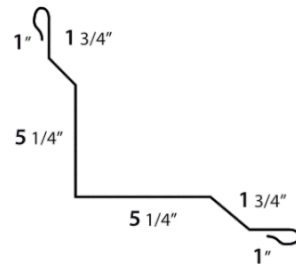
RAT GUARD



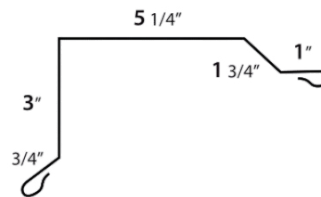
CORNER



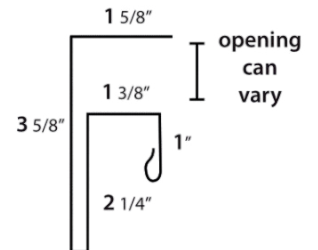
INSIDE CORNER



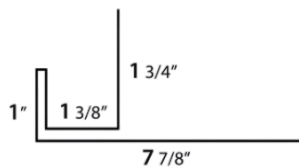
RAKE



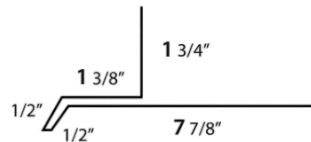
DOUBLE J



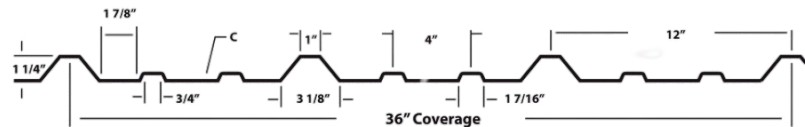
OVERHEAD DOOR JAMB



TOP FINISHER



PBR PROFILE



5



**LIFETIME METAL ROOFING
FABRICATION AND INSTALLATION**

Standing Seam Metal Roofing

What It Is

A premium metal panel system that uses hidden fasteners for a sleek appearance and long-term protection. Seam heights typically range from 1" to 2". Panels can be snap-locked or mechanically seamed, depending on application.

Specifications

Made from 24-gauge steel, available with SMP or Kynar finishes offering 40-year fade warranties. Panels are fabricated in-house to project specs.

Installation Method

Installed with clips or mechanical seaming for high-wind zones. Works on slopes 2:12 and greater. We provide full turnkey installation with expert crews.

Ideal Applications

Custom homes, modern architecture, churches, high-end residential, commercial storefronts, lake homes.

Selling Points

Exceptional curb appeal, durability up to 75 years, low maintenance, excellent for snow shedding, energy efficient, huge ROI on upscale builds.

Common Questions

Will it be noisy? No, sound is dampened by decking and insulation. Will it rust? No, it's coated and warrantied. Does it cost more? Yes, but it pays off.



Corrugated Metal Roofing & Siding

What It Is

An exposed fastener panel system where screws are visible but sealed with neoprene washers. Economical, fast to install, and structurally strong.

Specifications

Available in a variety of gauges and profiles including 7/8" corrugated and PBR panel. Cut to length, multiple color options.

Installation Method

Fastened through the panel into wood or purlins using neoprene washer screws. Installed over underlayment or directly onto battens.

Ideal Applications

Barns, garages, sheds, lean-tos, ag buildings, commercial warehouse siding, budget-conscious builds.

Selling Points

Quick turnaround, excellent durability, budget-friendly, great for large simple roof spans or utility structures.

Common Questions

Do screws leak? Only if over-tightened or installed incorrectly. Can I use this on homes?

Yes, if aesthetics and budget align, but we do not recommend it.



Trim & Accessories

Overview

The key to a complete system. We fabricate all trim pieces to match slope, color, and panel profile. Everything needed to finish the roof properly.

Trim Types

Ridge caps, gable trim, eave, valley, endwall, sidewall, transitions, Z-bars, starter strip, edge metal.

Accessories

Closures (vented/non-vented), pipe boots, underlayments, sealants, fasteners, snow guards, and more.

Fabrication Process

All trim and accessory pieces are bent in-house for job-specific fit. No outsourcing delays.

Selling Points

Faster installs, cleaner finish, fewer leaks, better airflow, and warranty coverage when full system is used.

Common Questions

Do I need all these parts? Yes, they protect the seams. Can I mix brands? Not recommended, color and compatibility issues.



Custom & Copper Work

What We Offer

We custom-build architectural metalwork: chimney caps, radius panels, flashing transitions, dormer wraps, and finials.

Why Copper

A timeless premium material that naturally patinas. Lasts 100+ years. High-end visual impact.

Copper Systems

All trims, panels, and accessories can be fabricated in copper. Soldered seams available.

Selling Points

Perfect for historic restorations, show homes, custom builds. High-value clients love the prestige.

Common Questions

Will it patina? Yes, and that's part of its charm. Can I mix copper and steel? Not advisable due to galvanic reaction.



EPDM Flat Roofing

What It Is

EPDM is a durable synthetic rubber membrane used for flat and low-slope roofs. It's widely used in commercial and residential applications.

Material & Options

Comes in large rolls, black or white color, with adhesive or ballast installation. Long seams are taped or glued.

Installation Methods

Can be loose-laid and ballasted with rock, glued directly to insulation, or mechanically fastened. RPP offers membrane and labor packages.

Ideal Applications

Garages, home additions, dormers, commercial flat roofs, and mixed-slope homes with low-slope rear sections.

Selling Points

Waterproof, UV-resistant, cost-effective, easy to tie into metal systems.

Common Questions

Will it last? Yes, 20 to 30 years is typical. Does it tear? Rarely, and easy to patch. Can I walk on it? Yes.





Roof Panels Plus – General Contractor Q&A Sheet

1. What services do you provide as a Prime Sub for metal roofing?

We handle the full scope of standing seam and specialty metal roof systems: fabrication, delivery, installation, and site-specific coordination. We are capable of taking on residential and commercial jobs of all sizes. Our bilingual W-2 project manager will coordinate everything — your only responsibility is to provide a dumpster and the permit.

2. What roofing systems and profiles do you specialize in?

We specialize in standing seam systems, particularly 24-gauge steel standing seam with concealed fasteners. Profiles include 1", 1.5", and 2" seams, fabricated to spec for slope, code, and aesthetics.

3. Do you fabricate your panels in-house?

Yes, all panels are fabricated in-house using state-of-the-art roll formers. This ensures top-tier quality control, faster turnaround, and reduced jobsite delays.

4. What materials and finishes do you offer?

We provide everything metal, including full copper systems. Our finishes include

premium SMP and Kynar coatings, with a 40-year color fade warranty.

5. How do you handle custom trim and flashing details?

We custom-fabricate all trim and flashing in-house to match each job's unique needs. We work from architectural and field dimensions to ensure a seamless, clean look.

6. What is your lead time from contract to install?

Our standard lead time is 6 weeks from signed contract to installation. Timelines vary slightly by project scope and weather, but we're highly consistent.

7. Can you handle insurance jobs, remodels, and new builds?

Yes — we are experienced in insurance restoration, remodeling, and new construction.

8. Do you provide labor only, materials only, or full turnkey services?

Our primary offering is full turnkey service. We occasionally provide labor only for large stone-coated metal shingle jobs, and we do offer material-only sales. We do not install panels we didn't fabricate ourselves.



9. How do you handle jobsite communication and coordination?

You'll work directly with our bilingual W-2 project manager and dedicated install foreman. We provide proactive job-specific updates, delivery schedules, and install coordination.

10. What safety measures do you follow on job sites?

We are fully insured and follow OSHA-compliant safety protocols, including proper harnessing, edge protection, and crew safety briefings.

11. Are your crews in-house or subcontracted?

We use a combination of in-house install teams and long-term vetted partners. All foremen are highly experienced in premium metal roof systems.

12. What's your service area?

We serve Minnesota, Wisconsin, Iowa, and the Dakotas.

13. How do you price projects and provide quotes?

We offer fast, accurate quoting based on takeoffs, site photos, or plans. Our quotes include materials, labor, and delivery as needed. GC partners benefit from volume pricing.

14. What warranties or guarantees do you offer?

We offer a 40-year color fade warranty on Kynar-coated panels and a 10-year labor warranty. Extended manufacturer warranties are available on select systems.

15. How can I get started or submit my first project?

Send us your plans or site info and we'll provide a tailored quote. Once approved, we schedule material production and installation.



Contact & Company Overview

Roof Panels Plus

(612) 355-8121

roofpanelsplus.com

info@roofpanelsplus.com

WHAT YOU GET:

- Lifetime metal roofing systems
- In-house expert fabrication and installation
- Over 60 years of combined metal roofing experience
- Licensed for residential, commercial, and agricultural projects
 - Experts in building sheet metal
 - Highly competitive pricing
- Fast turnaround (significantly faster than warehouse sourcing)
 - 40-year limited color fade warranty on coil stock
- Coil supplied by Elevate, Coated Metals Group, and others
 - Insurance claim work accepted
- Free estimates by the next business day
- 5% discount for seniors and veterans
- Family-owned business

WHAT WE OFFER:

- Metal Roofing
- Metal Custom Accessories
 - Metal Trim
 - Metal Siding
 - Metal Gutters
- Full Copper Systems Available